

A photograph of two men in traditional, dark-colored robes and white head coverings walking away from the camera on a dirt path. They are positioned in front of a large, rustic stone wall. The man on the left has a satchel slung over his shoulder. The background shows some greenery and a tree trunk on the left. The text is overlaid on the image in a white, serif font.

**“Hear the Word of God and Obey”**  
**Luke 11:14 - 36**

---

**Curt Deming**  
**Melbourne Community Church**  
**November 3, 2019**



# What will we learn?

---

- ❖ The battle is won, but not finished.
  - ❖ Jesus vs. Satan
  - ❖ Light vs. darkness
- ❖ Neutrality is not an option.
- ❖ Hearing the truth and obeying yields blessing.





# The Gospel of Luke

---

- ❖ I – The Launch (1:1-9:50)
  - ❖ November, 2018 – June, 2019
- ❖ II – The Teachings (9:51- 19:27)
  - ❖ October, 2019 – Spring, 2020
- ❖ III – Jerusalem (19:28 – 24:53)
  - ❖ Fall, 2020 or Spring, 2021



# Who is Jesus?

---

- ❖ Savior
- ❖ Christ
- ❖ Lord
- ❖ Son of David
- ❖ Son of Abraham
- ❖ Son of Adam
- ❖ Son of God
- ❖ Son of Man
- ❖ Suffering Servant
- ❖ Lamb of God
- ❖ Healer
- ❖ Great Teacher
- ❖ “Holy One of God”
- ❖ Bridegroom



# Who is Jesus?

---

- ❖ Lord of the Sabbath
  - ❖ A great prophet
  - ❖ “Master”
  - ❖ “Son of the Most High God”
  - ❖ God’s Messiah
- ❖ “My Son, whom I have chosen”



# Northern Israel

in the time of Christ

GREAT SEA  
(The Mediterranean)

Ashkelon

Phoenicia

PTOLEMAIS

Galilee

CAPERNAUM

BETHSAIDA

CANA

SEA OF GALILEE

NAZARETH

CAESAREA

Decapolis

Samaría

JOPPA

Judea

JORDAN RIVER

BETHEL

JERICO

JERUSALEM

BETHANY

BETHLEHEM

SALT SEA

Arabia





## Luke 11:14-16

---

Jesus was driving out a demon that was mute. When the demon left, the man who had been mute spoke, and the crowd was amazed. But some of them said, "By Beelzebul, the prince of demons, he is driving out demons." Others tested him by asking for a sign from heaven.



## Luke 11:17-18

---

Jesus knew their thoughts and said to them:  
“Any kingdom divided against itself will be ruined, and a house divided against itself will fall. If Satan is divided against himself, how can his kingdom stand? I say this because you claim that I drive out demons by Beelzebul.





## Luke 11:19-20

---

**“Now if I drive out demons by Beelzebul,  
by whom do your followers drive them out?  
So then, they will be your judges. But if  
I drive out demons by the finger of God,  
then the kingdom of God has come upon you.**





## Luke 11:21-22

---

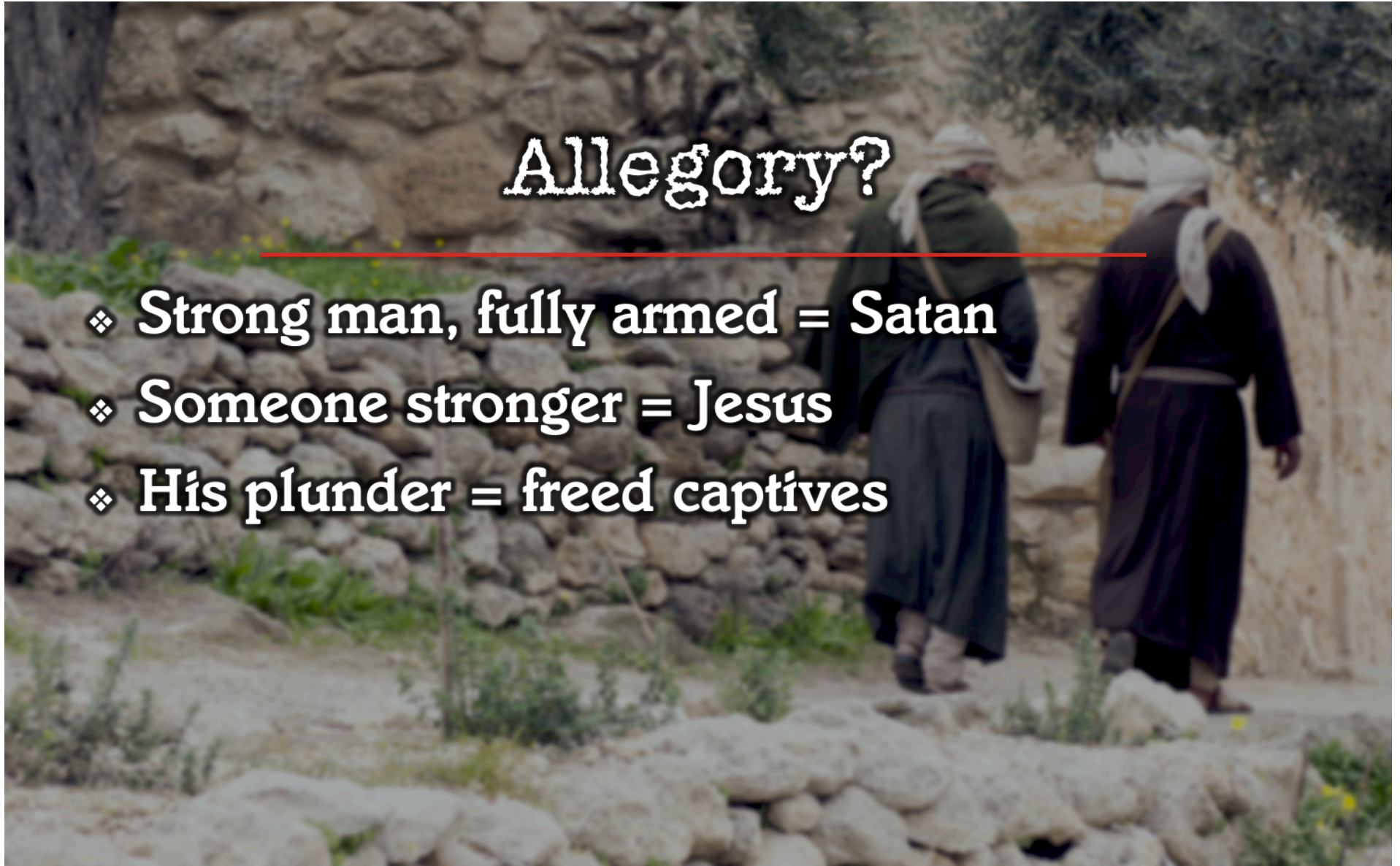
**“When a strong man, fully armed, guards his own house, his possessions are safe. But when someone stronger attacks and overpowers him, he takes away the armor in which the man trusted and divides up his plunder.”**



# Allegory?

---

- ❖ Strong man, fully armed = Satan
- ❖ Someone stronger = Jesus
- ❖ His plunder = freed captives







## Luke 3:16

---

**John answered them all, “I baptize you with water. But one who is more powerful than I will come, the straps of whose sandals I am not worthy to untie. He will baptize you with the Holy Spirit and fire.”**



A photograph of two men in traditional, long, dark robes and white head coverings walking away from the camera on a rocky, uneven path. The path is bordered by a low stone wall on the left and a taller, more solid stone wall on the right. The background shows more of the stone wall and some greenery. The overall scene is outdoors and appears to be in a rural or historical setting.

**Luke 11:23**

---

**“Whoever is not with me is against me, and whoever does not gather with me scatters.**





## Luke 11:24-25

---

**“When an impure spirit comes out of a person, it goes through arid places seeking rest and does not find it. Then it says, ‘I will return to the house I left.’ When it arrives, it finds the house swept clean and put in order.**



A photograph of two men in traditional, long, dark robes and head coverings walking away from the camera on a rocky, uneven path. The background shows a stone wall and some greenery. The text is overlaid on the image.

## Luke 11:26

---

**“Then it goes and takes seven other spirits more wicked than itself, and they go in and live there. And the final condition of that person is worse than the first.”**



The background of the slide is a photograph of a stone wall. Two people, likely men in traditional Middle Eastern or Middle Eastern-style clothing, are walking away from the camera on a path. One is wearing a dark robe and a white head covering, and the other is wearing a brown robe and a white head covering. The scene is outdoors with some greenery and a tree trunk visible on the left.

## Luke 11:27-28

---

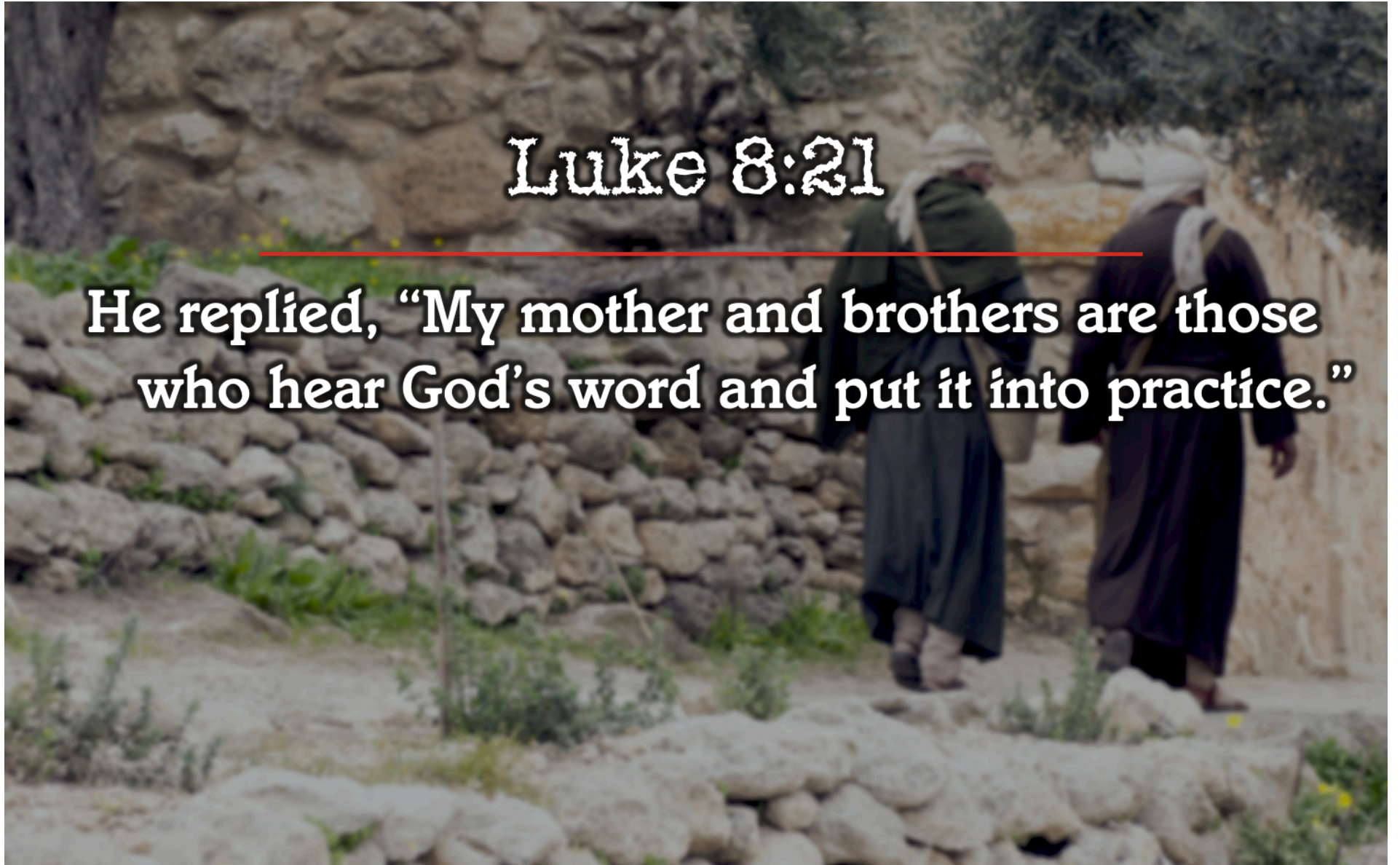
**As Jesus was saying these things, a woman in the crowd called out, “Blessed is the mother who gave you birth and nursed you.” He replied, “Blessed rather are those who hear the word of God and obey it.”**



## Luke 8:21

---

He replied, “My mother and brothers are those who hear God’s word and put it into practice.”





## Luke 11:29-30

---

**As the crowds increased, Jesus said, “This is a wicked generation. It asks for a sign, but none will be given it except the sign of Jonah. For as Jonah was a sign to the Ninevites, so also will the Son of Man be to this generation.”**



# Sign of Jonah?

---

- ❖ Preaching of repentance
- ❖ Preaching of judgment
- ❖ Divine rescue







## Luke 11:31

---

**“The Queen of the South will rise at the judgment with the people of this generation and condemn them, for she came from the ends of the earth to listen to Solomon’s wisdom; and now something greater than Solomon is here.**





## Luke 11:32

---

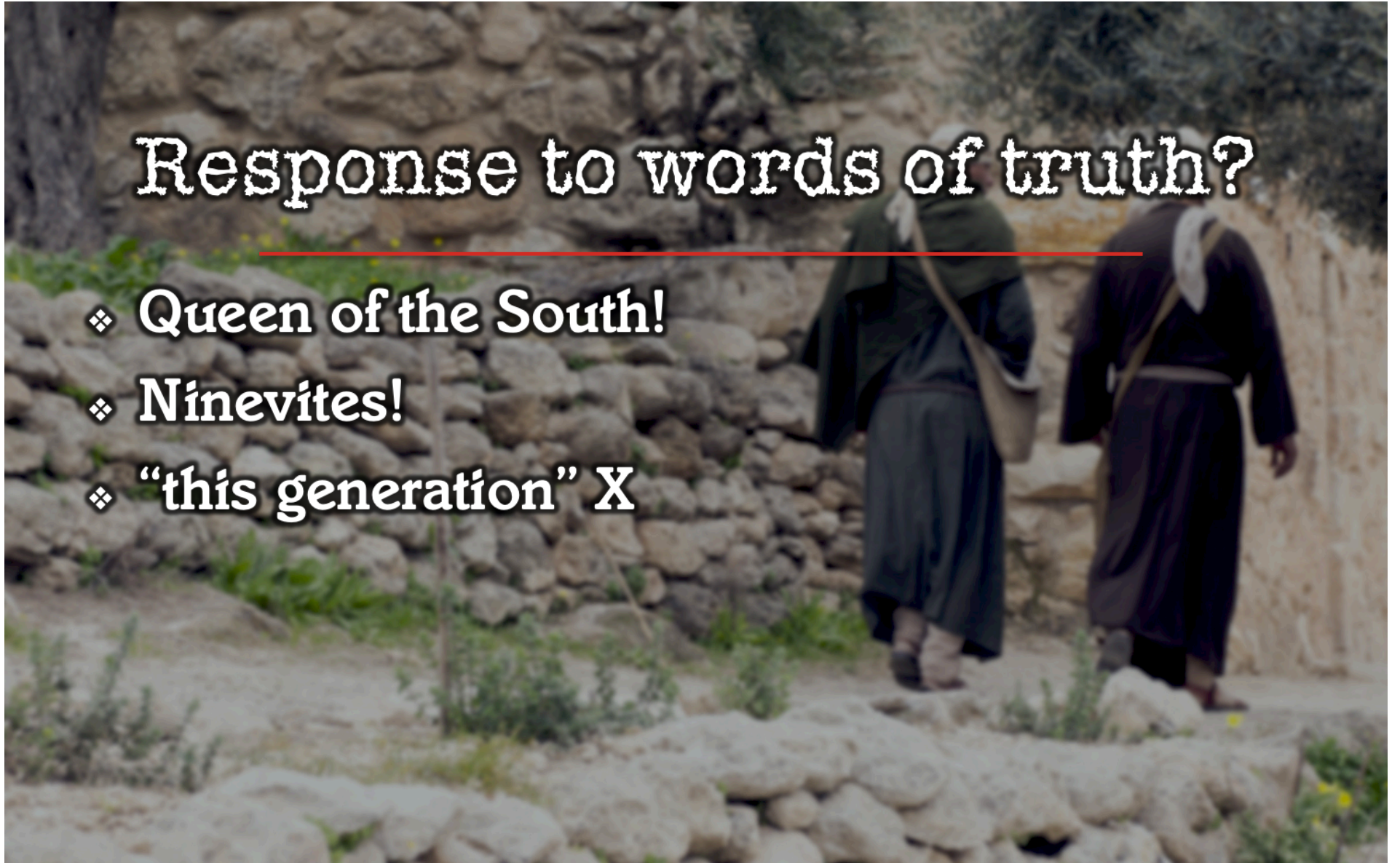
**“The men of Nineveh will stand up at the judgment with this generation and condemn it, for they repented at the preaching of Jonah; and now something greater than Jonah is here.”**



# Response to words of truth?

---

- ❖ Queen of the South!
- ❖ Ninevites!
- ❖ “this generation” X

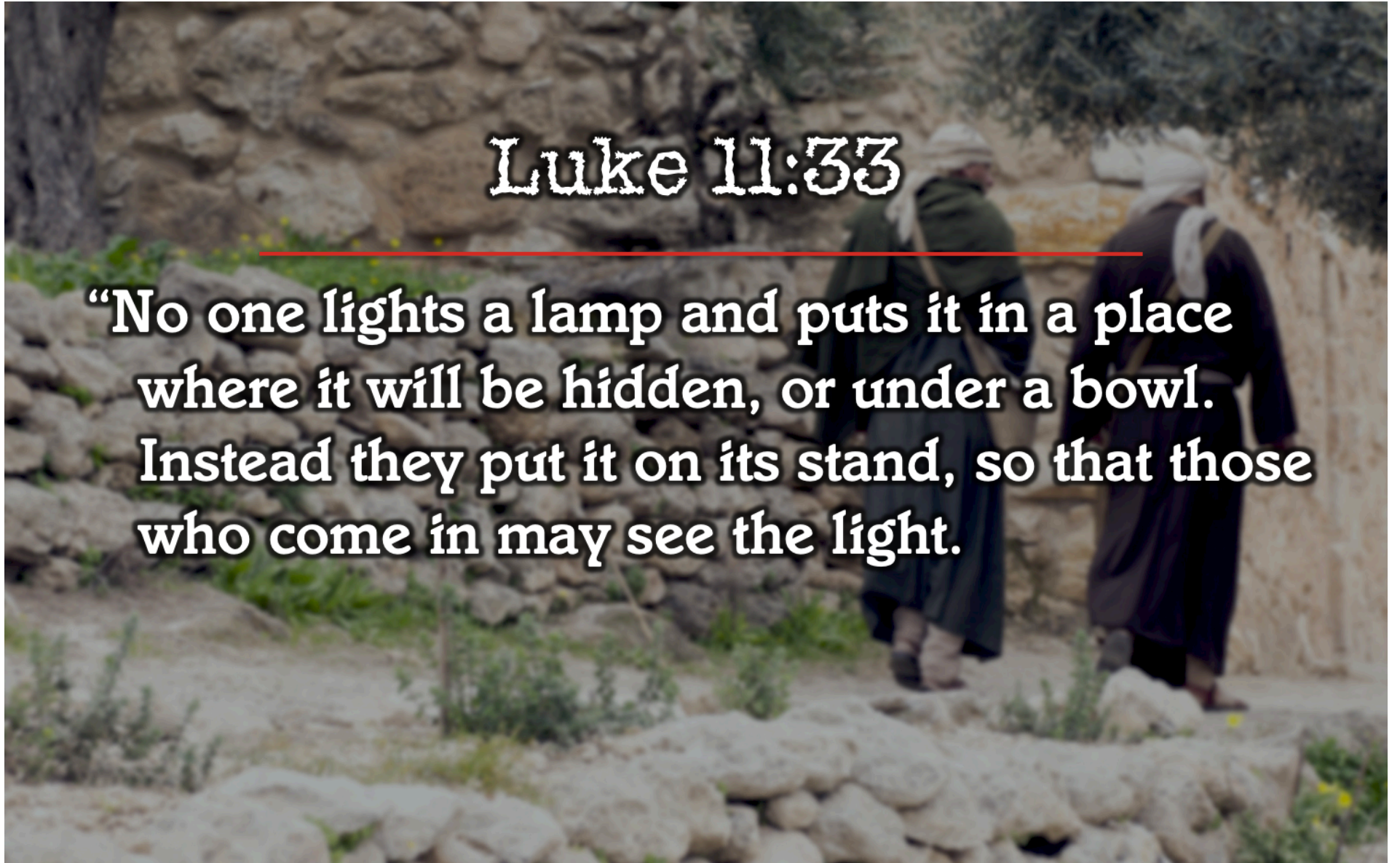




## Luke 11:33

---

**“No one lights a lamp and puts it in a place where it will be hidden, or under a bowl. Instead they put it on its stand, so that those who come in may see the light.”**





A photograph of two men in traditional, dark-colored robes and head coverings walking away from the camera on a rocky, uneven path. The background consists of a rough stone wall and some sparse green vegetation. The overall scene is outdoors and appears to be in a rural or historical setting.

## Luke 11:34

---

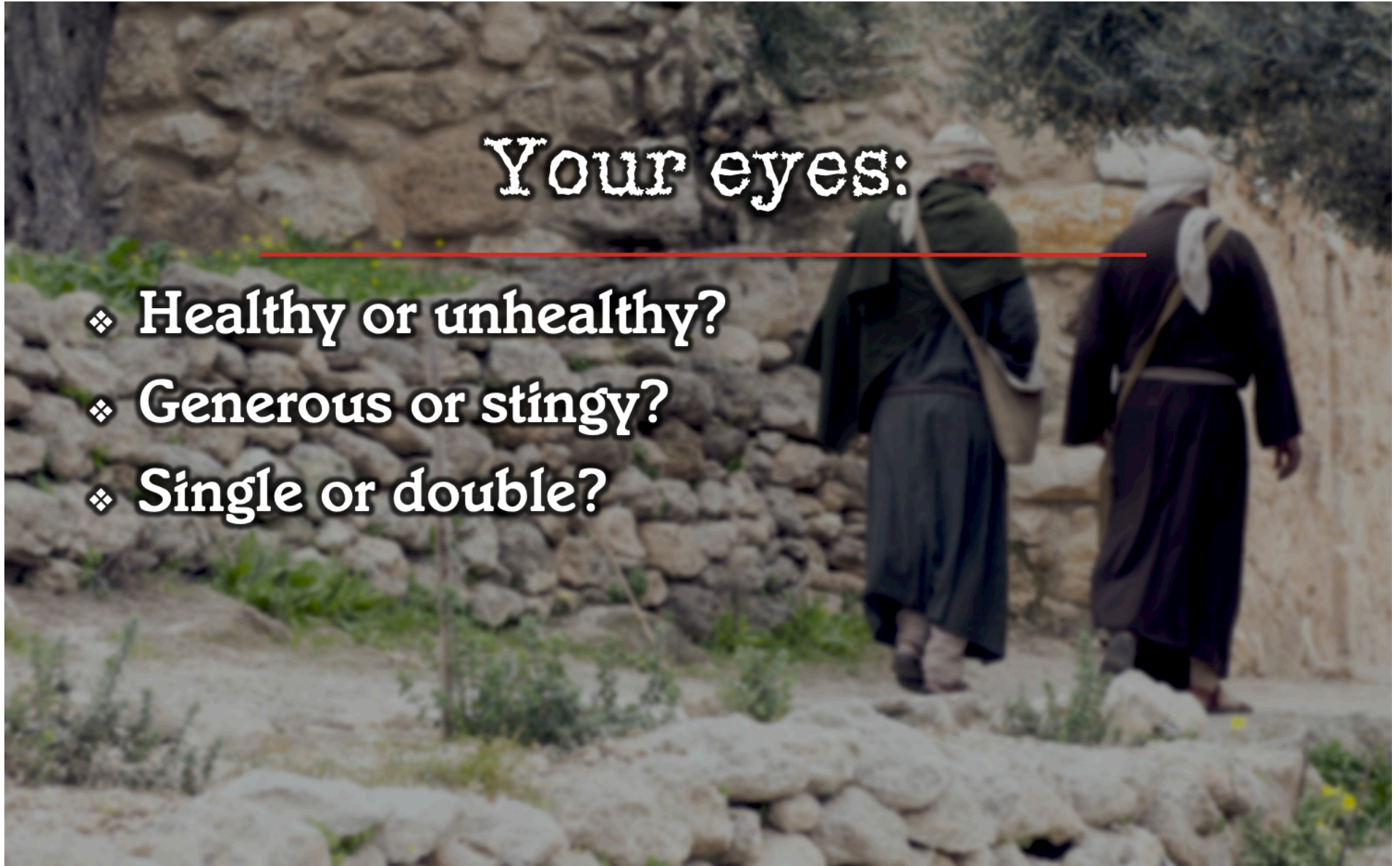
**“Your eye is the lamp of your body. When your eyes are healthy, your whole body also is full of light. But when they are unhealthy, your body also is full of darkness.”**



# Your eyes:

---

- ❖ **Healthy or unhealthy?**
- ❖ **Generous or stingy?**
- ❖ **Single or double?**







## Luke 11:35-36

---

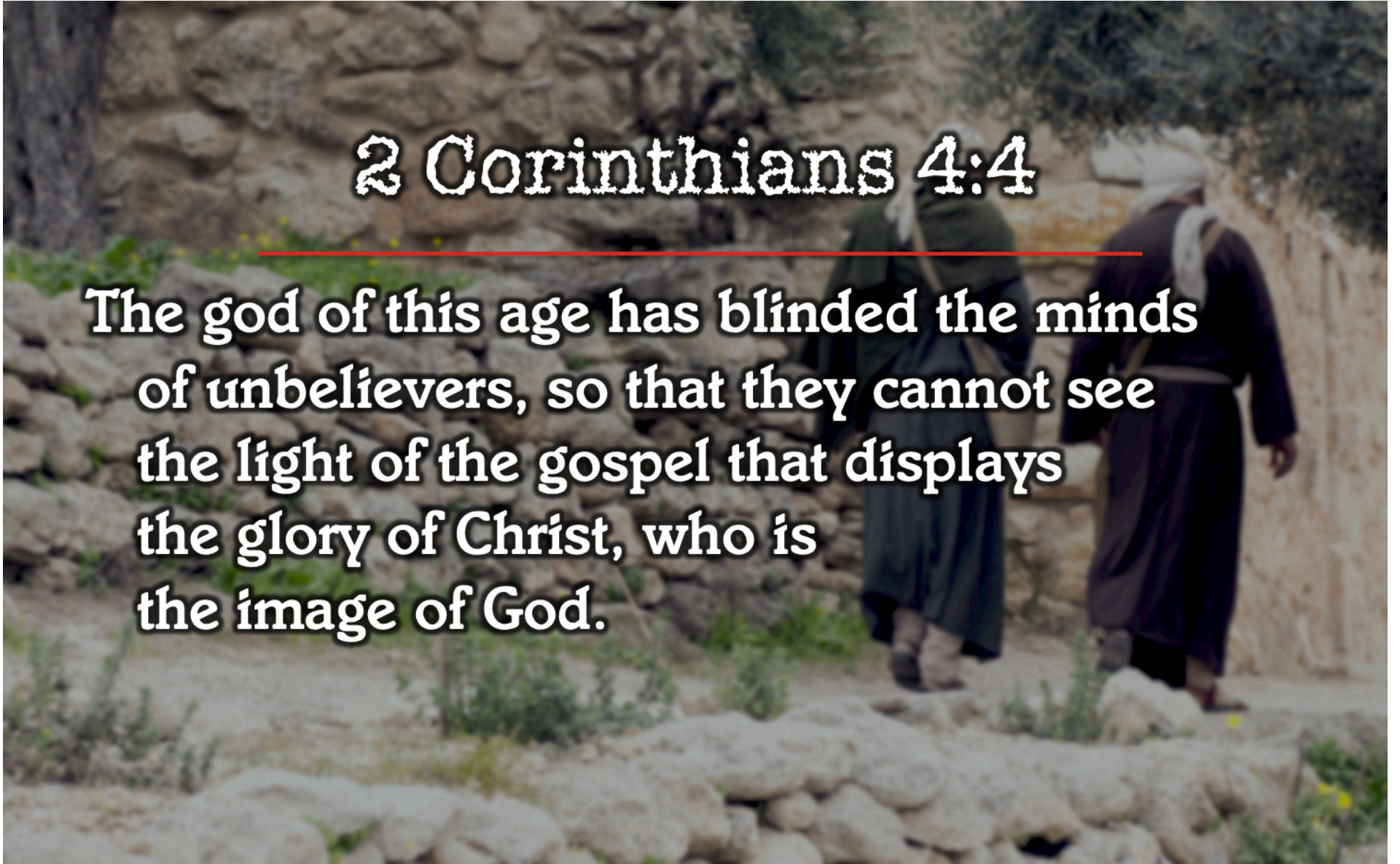
**“See to it, then, that the light within you is not darkness. Therefore, if your whole body is full of light, and no part of it dark, it will be just as full of light as when a lamp shines its light on you.”**



## 2 Corinthians 4:4

---

The god of this age has blinded the minds of unbelievers, so that they cannot see the light of the gospel that displays the glory of Christ, who is the image of God.





## Matthew 5:14-15

---

**“You are the light of the world. A town built on a hill cannot be hidden. Neither do people light a lamp and put it under a bowl. Instead they put it on its stand, and it gives light to everyone in the house.**



A photograph of two men in traditional, dark-colored robes and head coverings walking away from the camera on a rocky, uneven path. The path is bordered by a low stone wall on the left and a taller wall on the right. The background shows more of the rocky terrain and some sparse vegetation. The text is overlaid on the image.

## Matthew 5:16

---

**“In the same way, let your light shine before others, that they may see your good deeds and glorify your Father in heaven.”**



A photograph of two individuals in traditional, dark-colored robes and head coverings walking away from the camera on a rocky, uneven path. The path is bordered by a low stone wall on the left and a taller, more substantial stone wall on the right. The background shows more of the stone wall and some sparse vegetation. The overall scene is outdoors and appears to be in a rural or historical setting.

**Darrell L. Bock:**

---

**“Someday we will see God, and he will ask us what we have done with his light.”**



# What will we learn?

---

- ❖ The battle is won, but not finished.
  - ❖ Jesus vs. Satan
  - ❖ Light vs. darkness
- ❖ Neutrality is not an option.
- ❖ Hearing the truth and obeying yields blessing.







The background of the slide is a photograph of two individuals in traditional, dark-colored robes and head coverings walking away from the camera on a rocky, uneven path. The path is made of large, light-colored stones. The background shows a natural setting with trees and a stone wall on the right. The text is overlaid on the left side of the image.

# Are you being called?

---

- ❖ To receive Christ
- ❖ To become a member of Melbourne Community Church
- ❖ To pray / to receive prayer
- ❖ To affirm or reaffirm a commitment
- ❖ To receive the Lord's Supper



# Life Begins in the Womb

---

❖ Luke 1:15

❖ Luke 1:41

❖ Psalm 22:9-10

❖ Psalm 139:13

❖ Isaiah 49:1

❖ Jeremiah 1:4-5

